

FIG.1

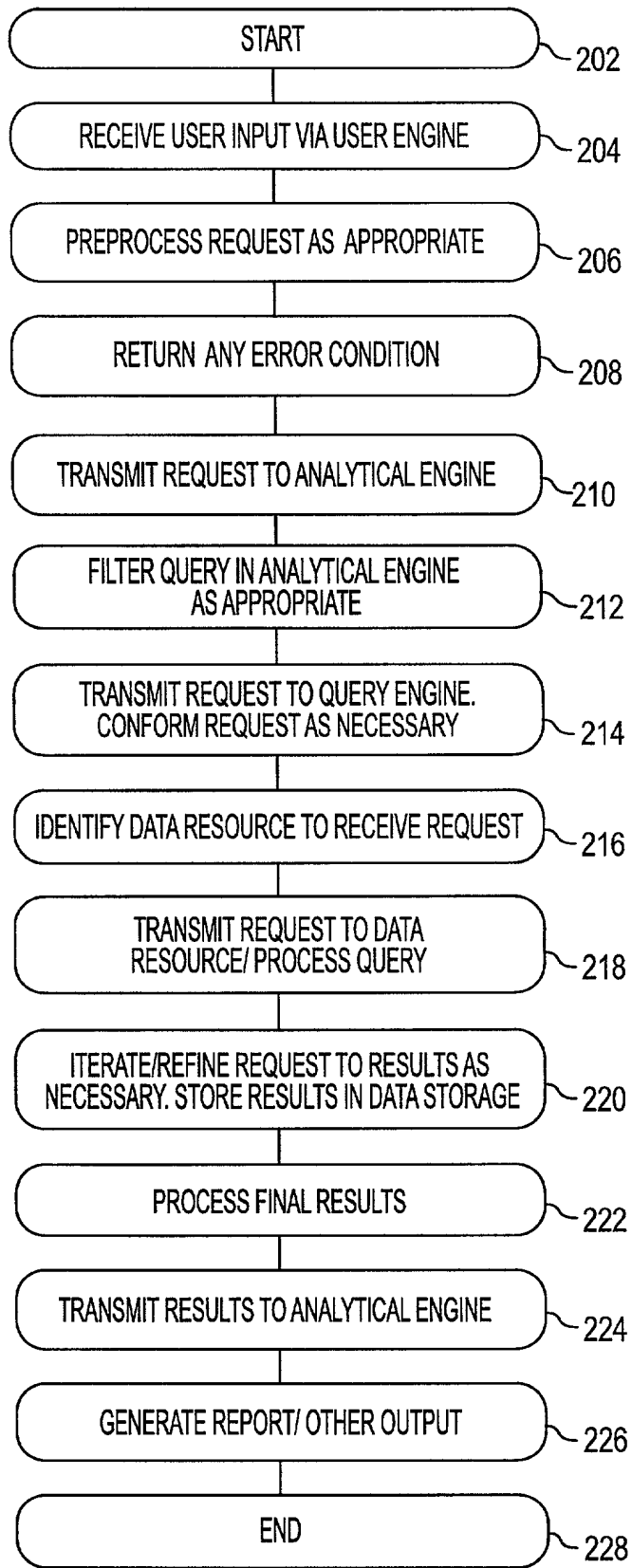


FIG. 2

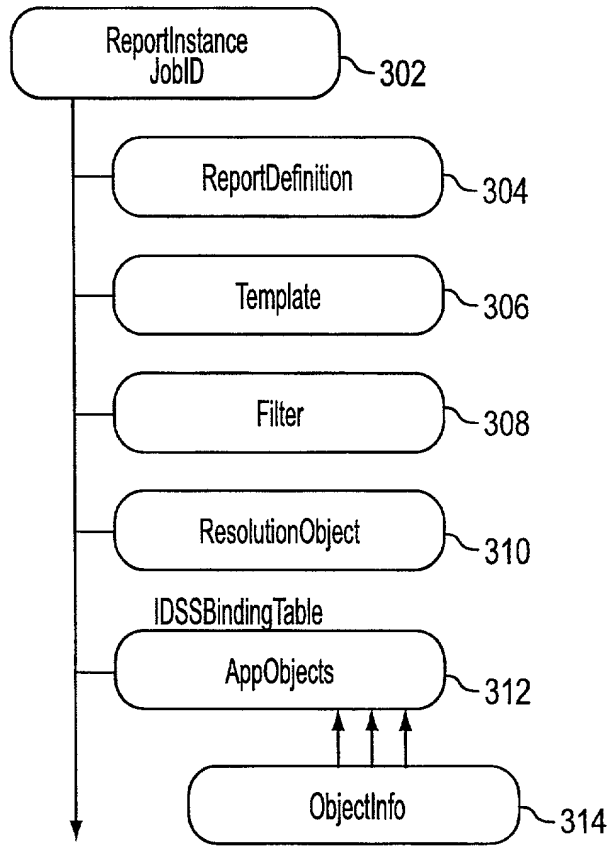


FIG. 3

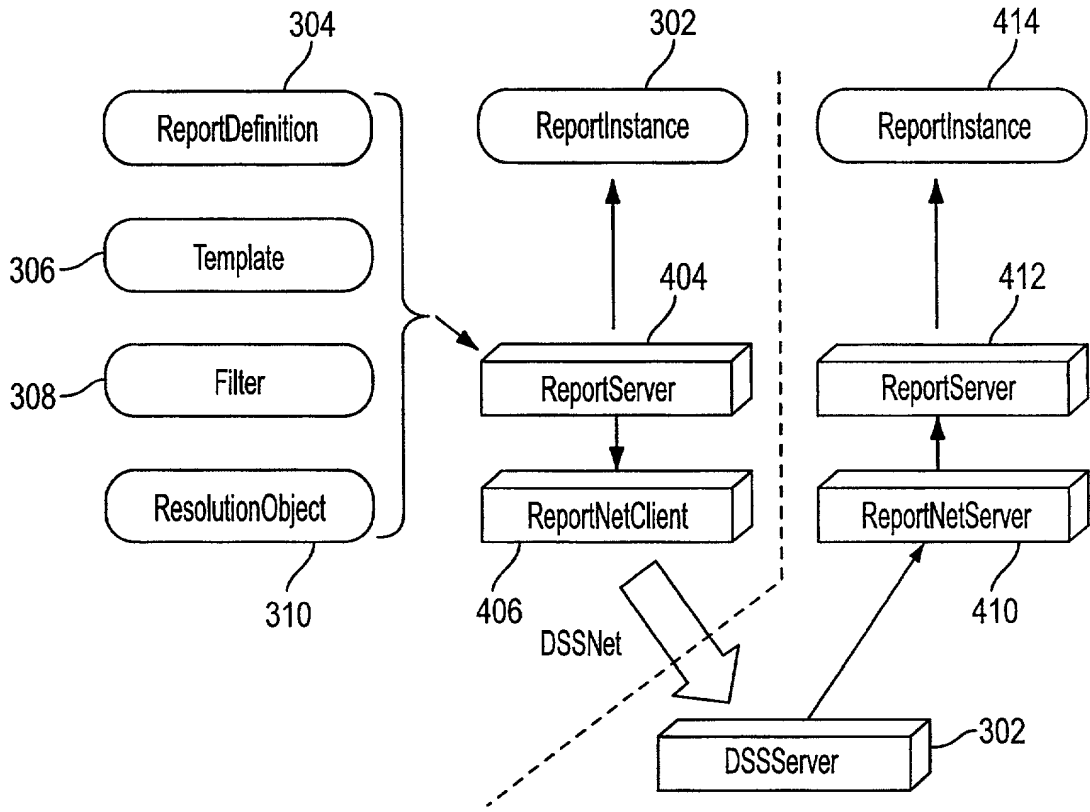


FIG. 4

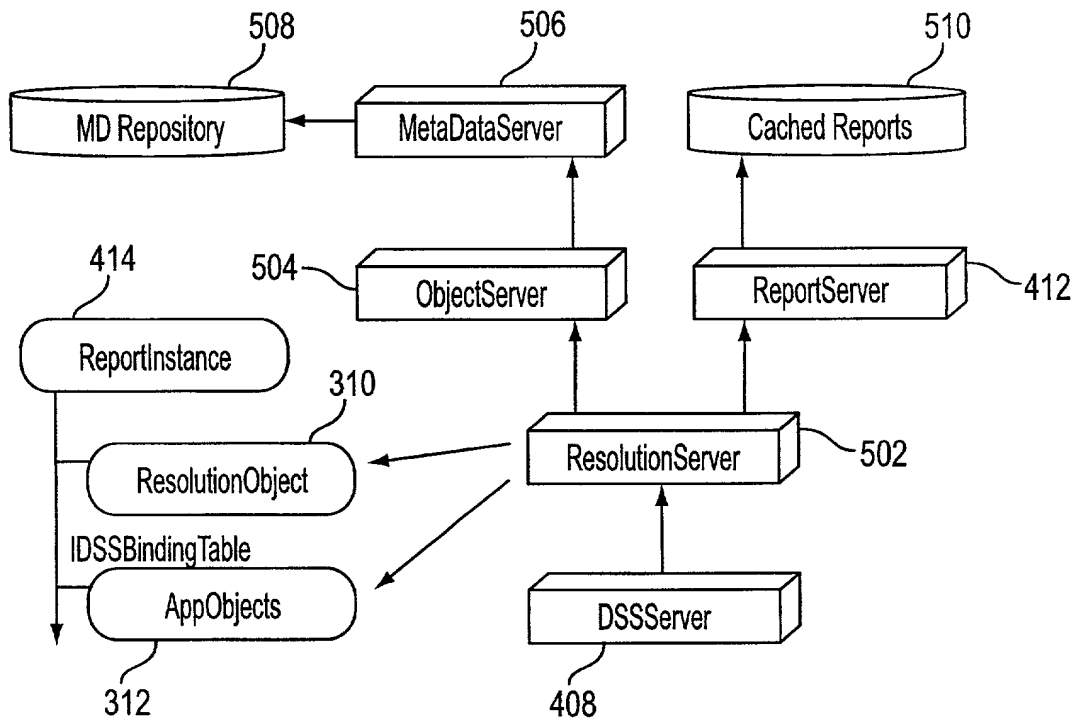


FIG. 5

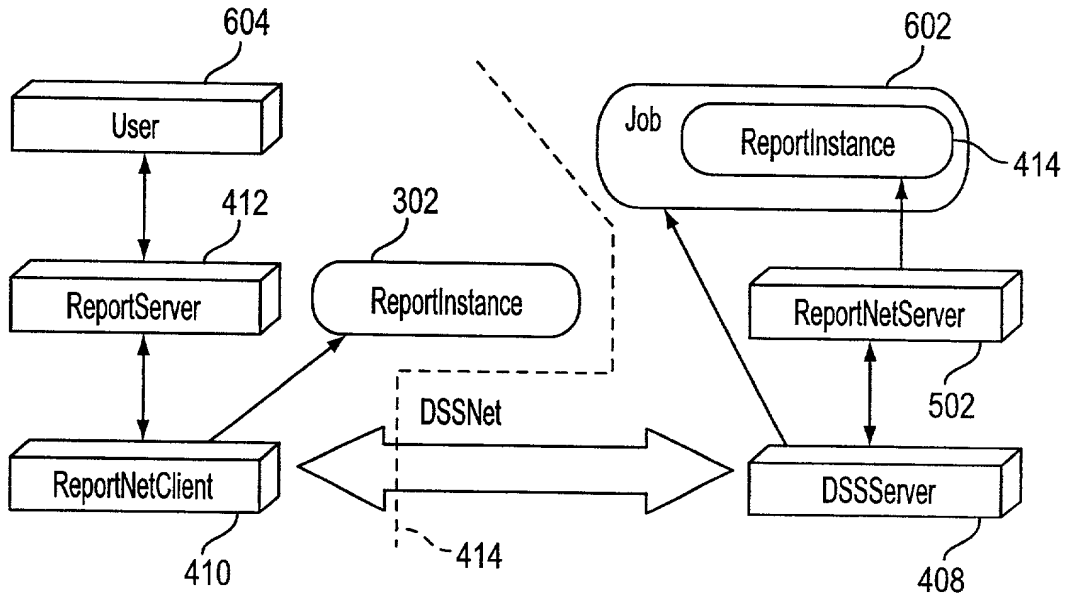


FIG. 6

FROM RESOLUTION OBJECT		
FROM PROMPT INSTANCE		
PROMPT OBJECT		
TYPE DEFAULT PROPERTIES VALIDATION PROPERTIES PROMPT PROPERTIES IMPORTS PROPERTIES IMPORTABLE TITLE, MEANING REUSE	MERGE INDEX ExportToPrompt IMPORTS <hr/> OVERRIDES THESE PROPERTIES TITLE, MEANING, REUSE DEFAULT	ANSWER PREVIOUS, HASPREVIOUS LOCATIONS CLOSED USED INCOMPLETE, LOCKED <hr/> OVERRIDES THESE PROPERTIES VALIDATION PROPERTIES

FIG. 7

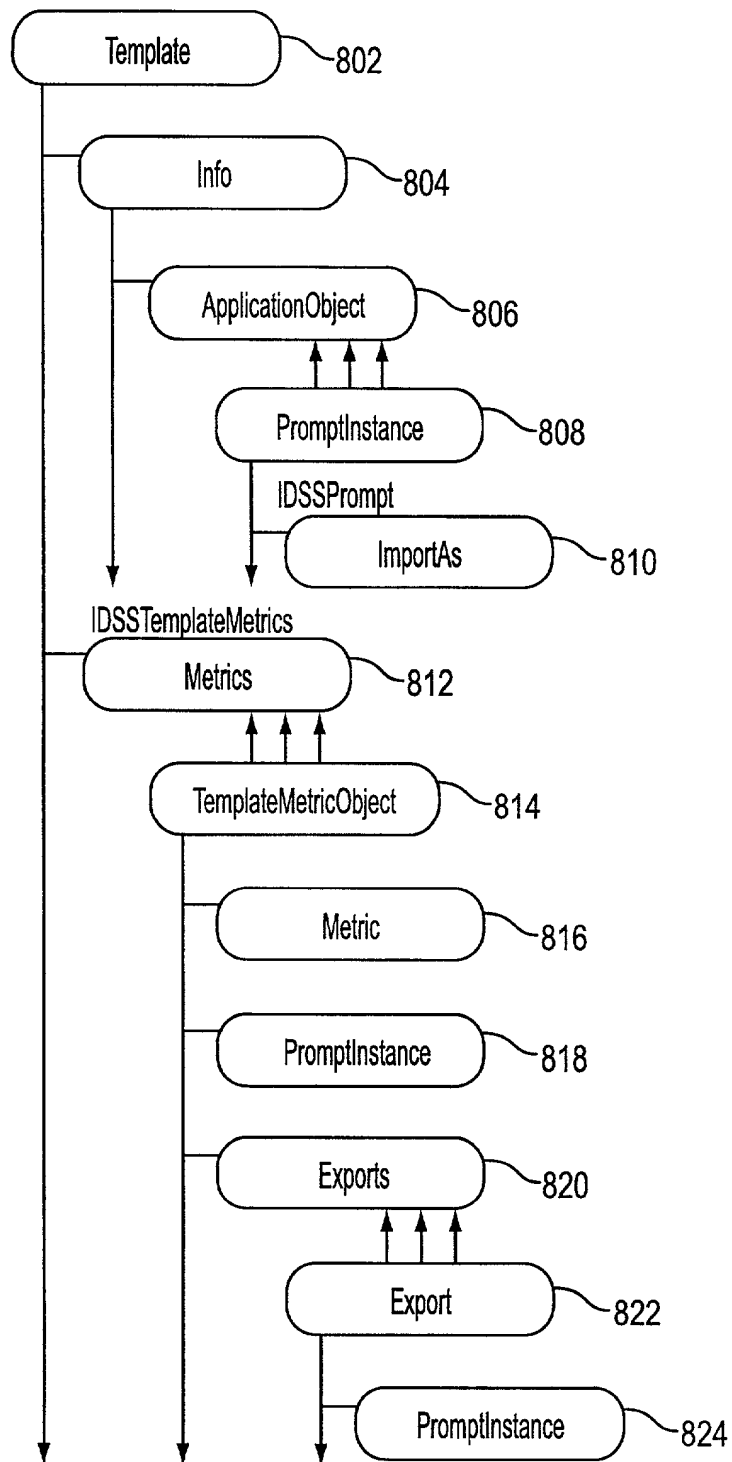


FIG. 8

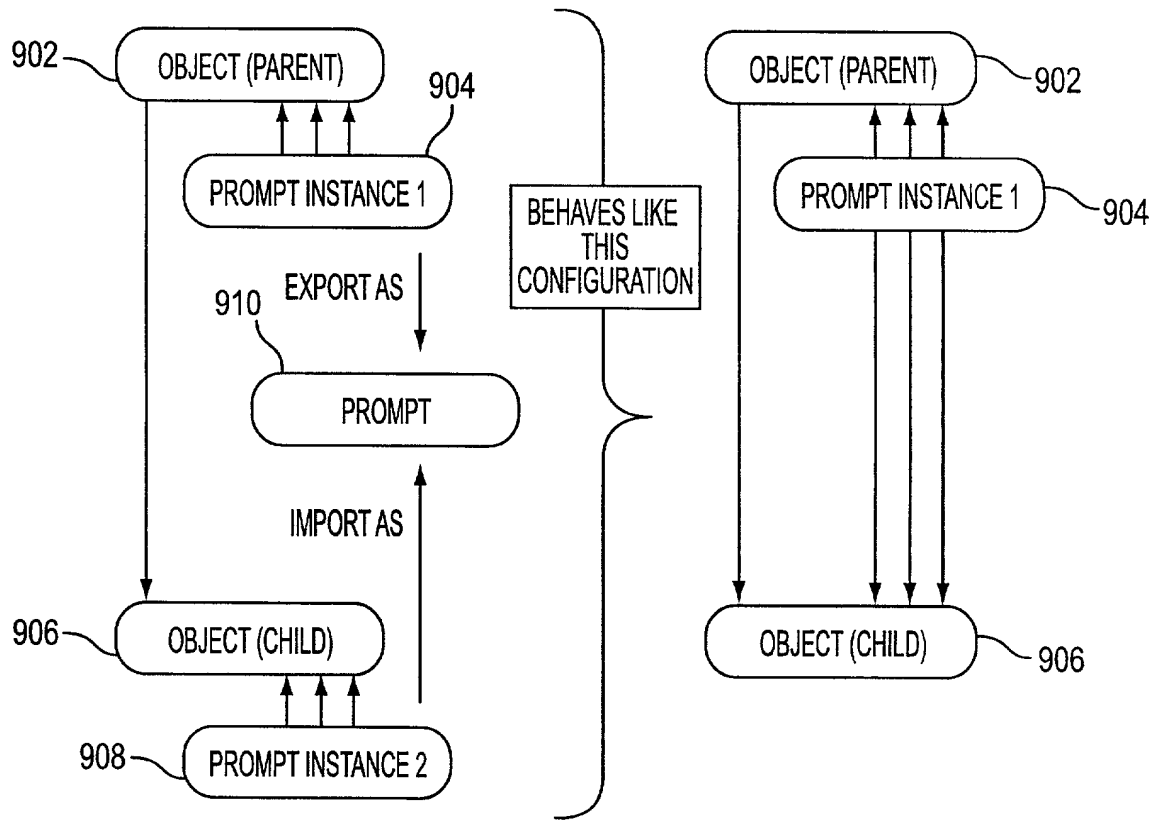


FIG. 9

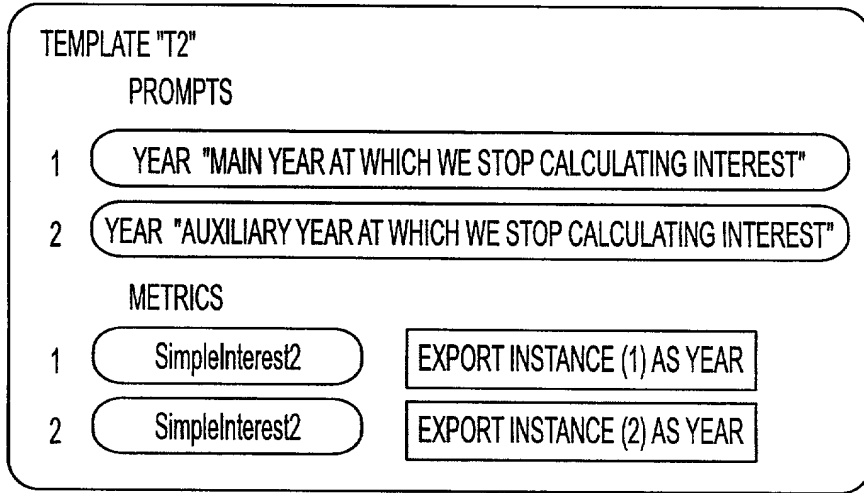


FIG. 10

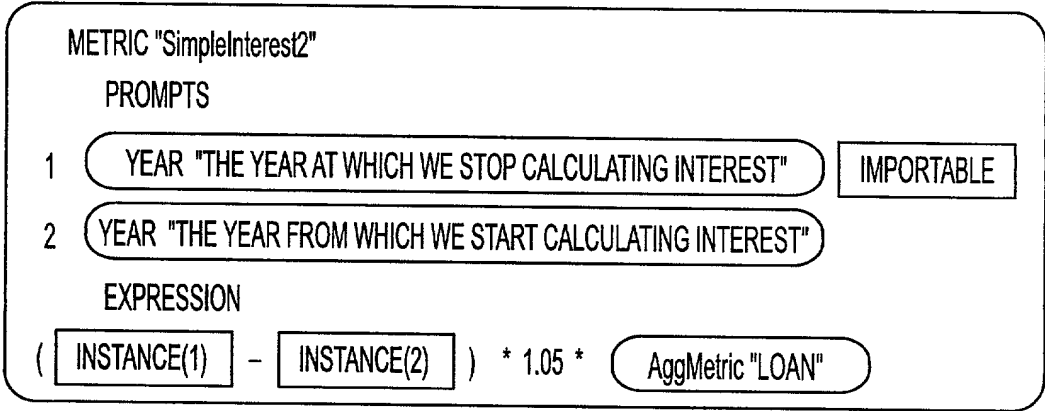


FIG. 11A

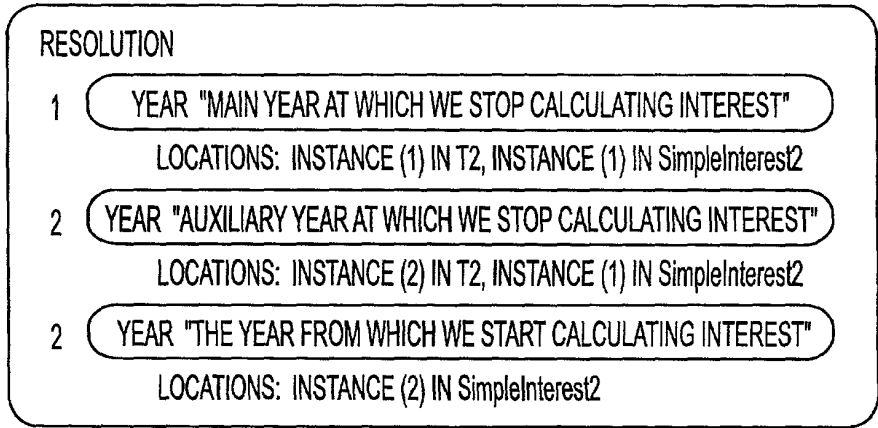


FIG. 11B

USER ACTION ON DRAFT PROMPT	EFFECT OF ACTION ON BLANK PROMPTS 1204	SITUATIONS IN WHICH AN ERROR IS RETURNED
1202 CANCELS	ALL BLANK PROMPTS ARE CANCELED, EVEN IF THEY WERE ALREADY CLOSED, AND EVEN IF THEIR REUSE PROPERTY SAYS THAT THEY CANNOT BE CANCELED.	ACTION FAILS ONLY IF THE DRAFT PROMPT CANNOT BE CANCELED. 1210
1208 SETS TO DEFAULT	EACH OPEN BLANK PROMPT IS CLOSED TO ITS DEFAULT VALUE, OR CANCELED IF IT HAS NONE.	ACTION FAILS IF THERE IS A BLANK PROMPT THAT HAS NO DEFAULT VALUE, AND WHICH CANNOT BE CANCELED.
1214 SETS TO PREVIOUS	EACH OPEN BLANK PROMPT IS CLOSED TO ITS PREVIOUS VALUE. IF IT HAS NO PREVIOUS VALUE THEN IT IS DECLINED.	ACTION FAILS IF A BLANK PROMPT'S REUSE PROPERTY SAYS THAT THE BLANK PROMPT CANNOT BE DECLINED.
1220 DECLINES TO ANSWER	DETERMINES AN ACTION 1222 (PREVIOUS / DEFAULT / CANCEL / BREAK) FOR THE DRAFT PROMPT. THEN APPLIES THE ACTION AS DESCRIBED ABOVE.	ACTION FAILS IF EITHER THE DRAFT PROMPT'S REUSE PROPERTY SAYS IT CANNOT BE DECLINED, OR IF ONE OF THE BLANK PROMPTS CANNOT BE ANSWERED IN THE PRESCRIBED MANNER.

1216

FIG. 12

FOR THE

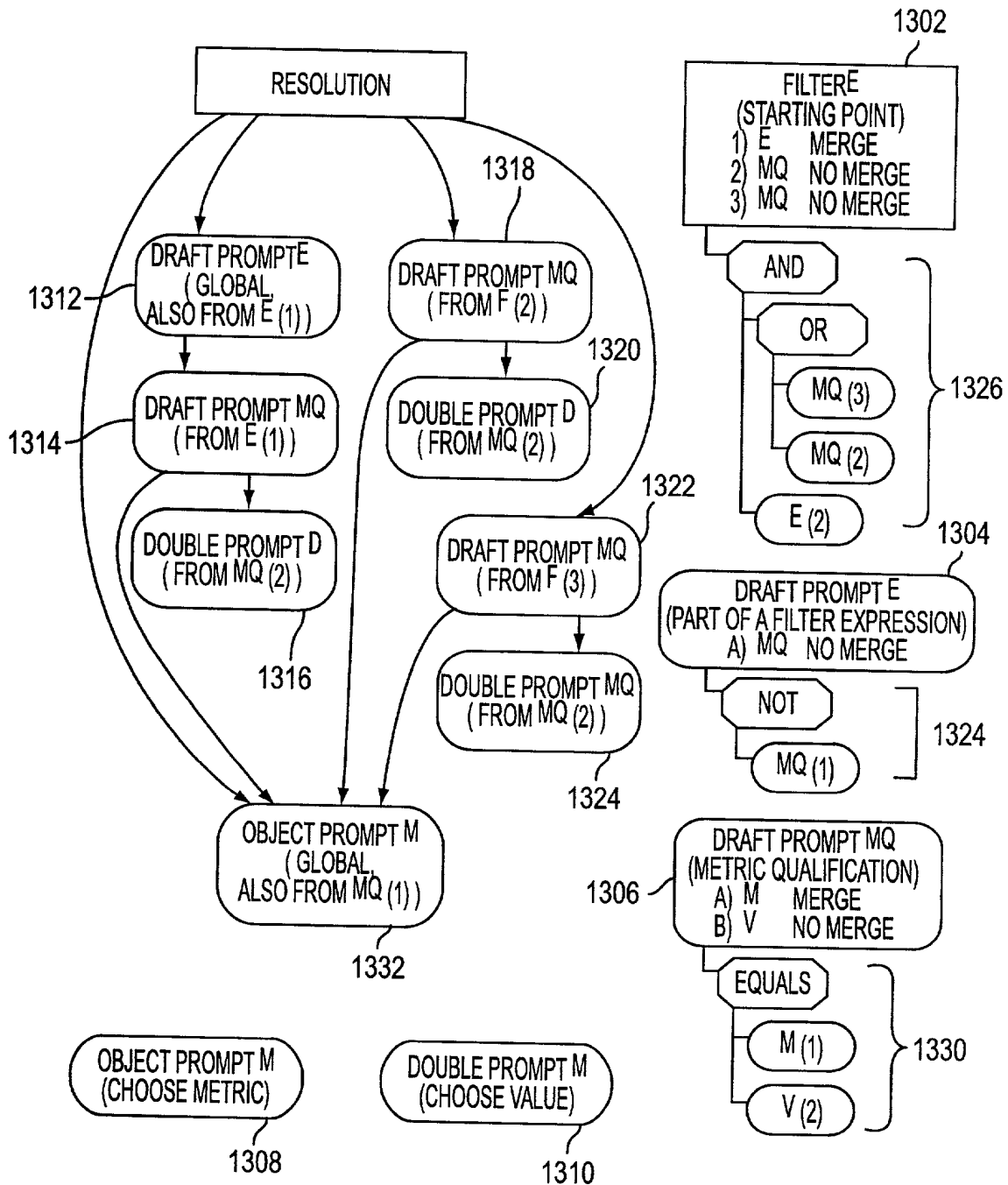


FIG. 13

NAME	ANSWER	MINIMUM	MAXIMUM	ORIGIN	RESTRICTION
DSSPromptBoolean	TRUE OR FALSE	EMPTY	EMPTY	EMPTY	EMPTY
DSSPromptLong	LONG	LONG	LONG	EMPTY	EMPTY
DSSPromptString	STRING	LONG	LONG	EMPTY	EMPTY
DSSPromptDouble	DOUBLE	DOUBLE	DOUBLE	EMPTY	EMPTY
DSSPromptDate					
DSSPromptObjects	OBJECT INFO OR FOLDER	LONG	LONG	EMPTY	SEARCH
DSSPromptElements	ELEMENTS OR ELEMENT	LONG	LONG	DIMENSION OR ATTRIBUTE	ATTRIBUTE OR FILTER
DSSPromptExpression	EXPRESSION	LONG	LONG	EMPTY	EXPRESSION TYPE
DSSPromptExpressionDraft	EXPRESSION	EMPTY	EMPTY	EXPRESSION	EMPTY

FIG. 14

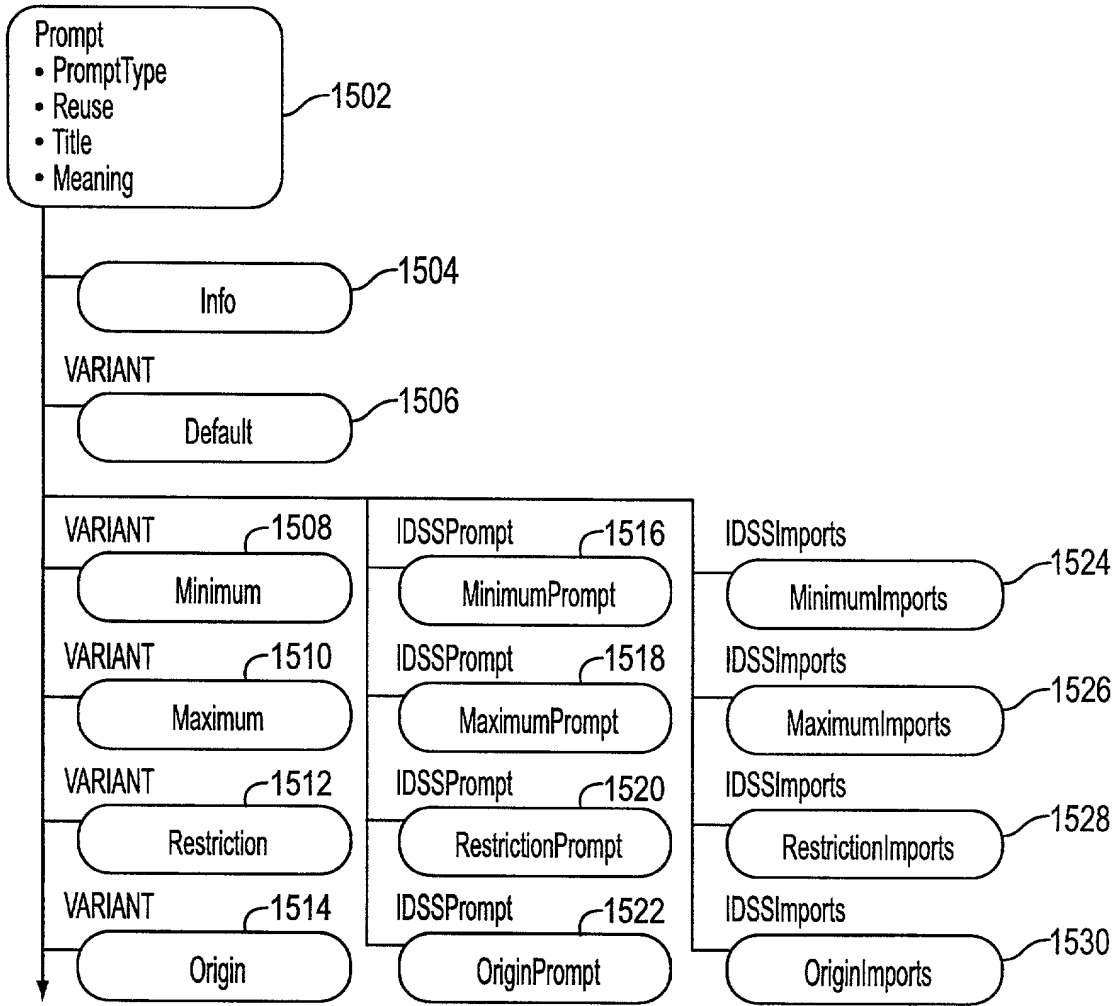


FIG.15

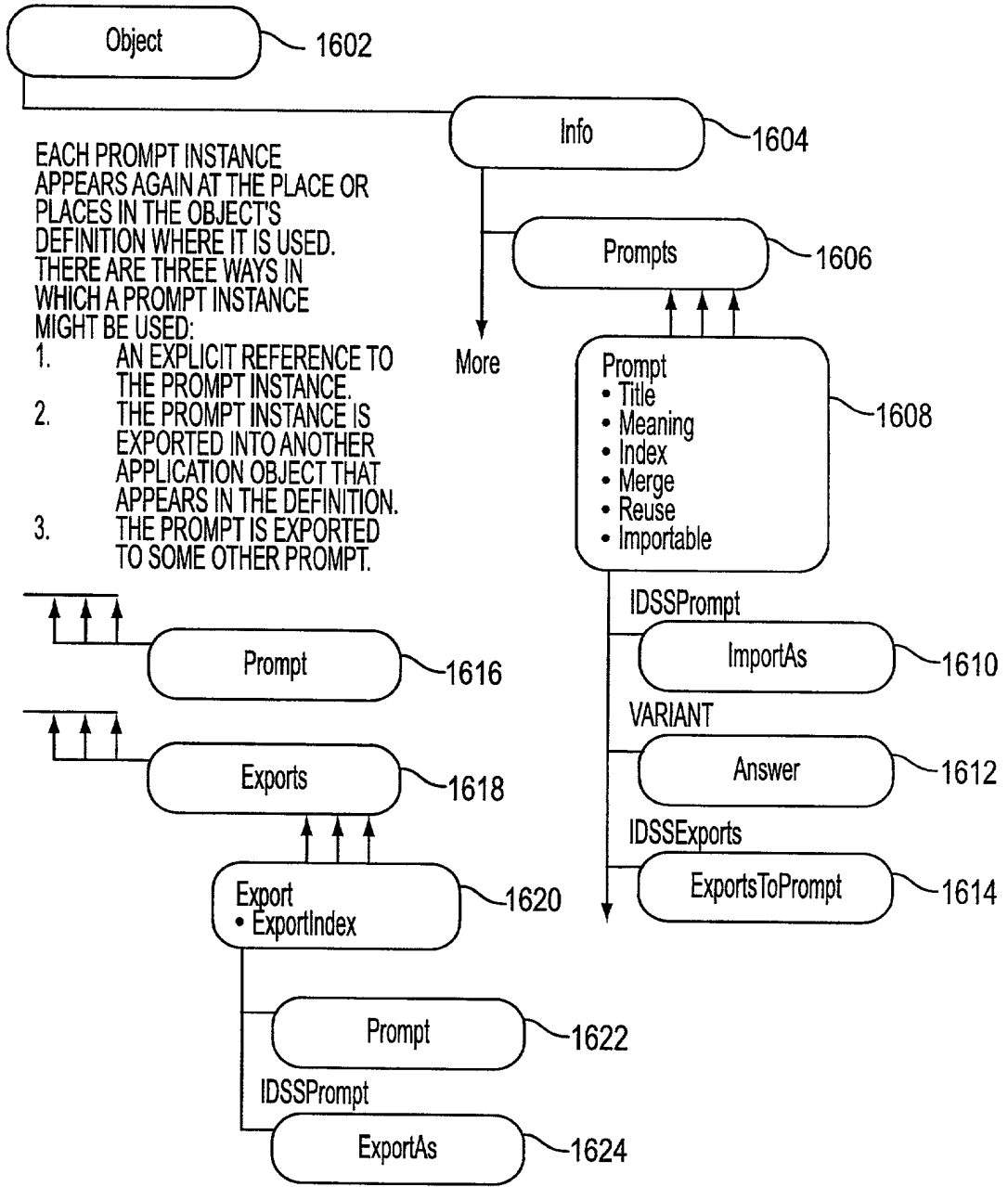


FIG. 16

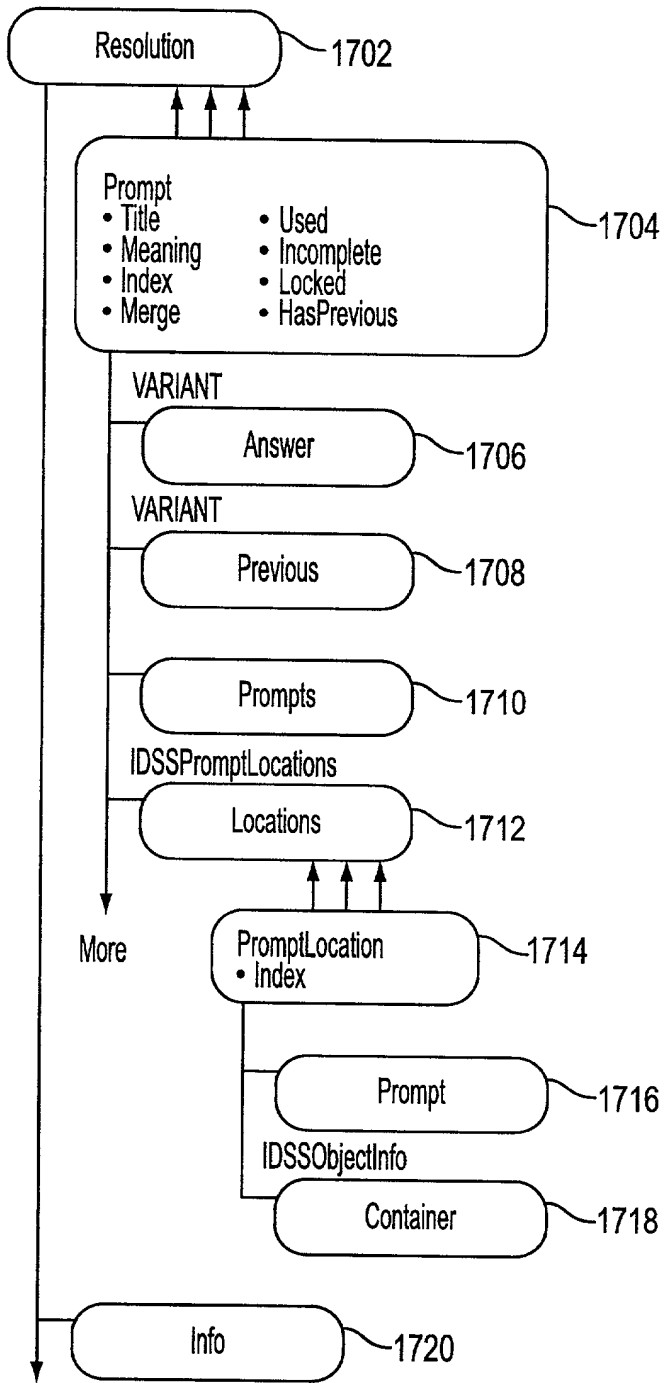


FIG. 17